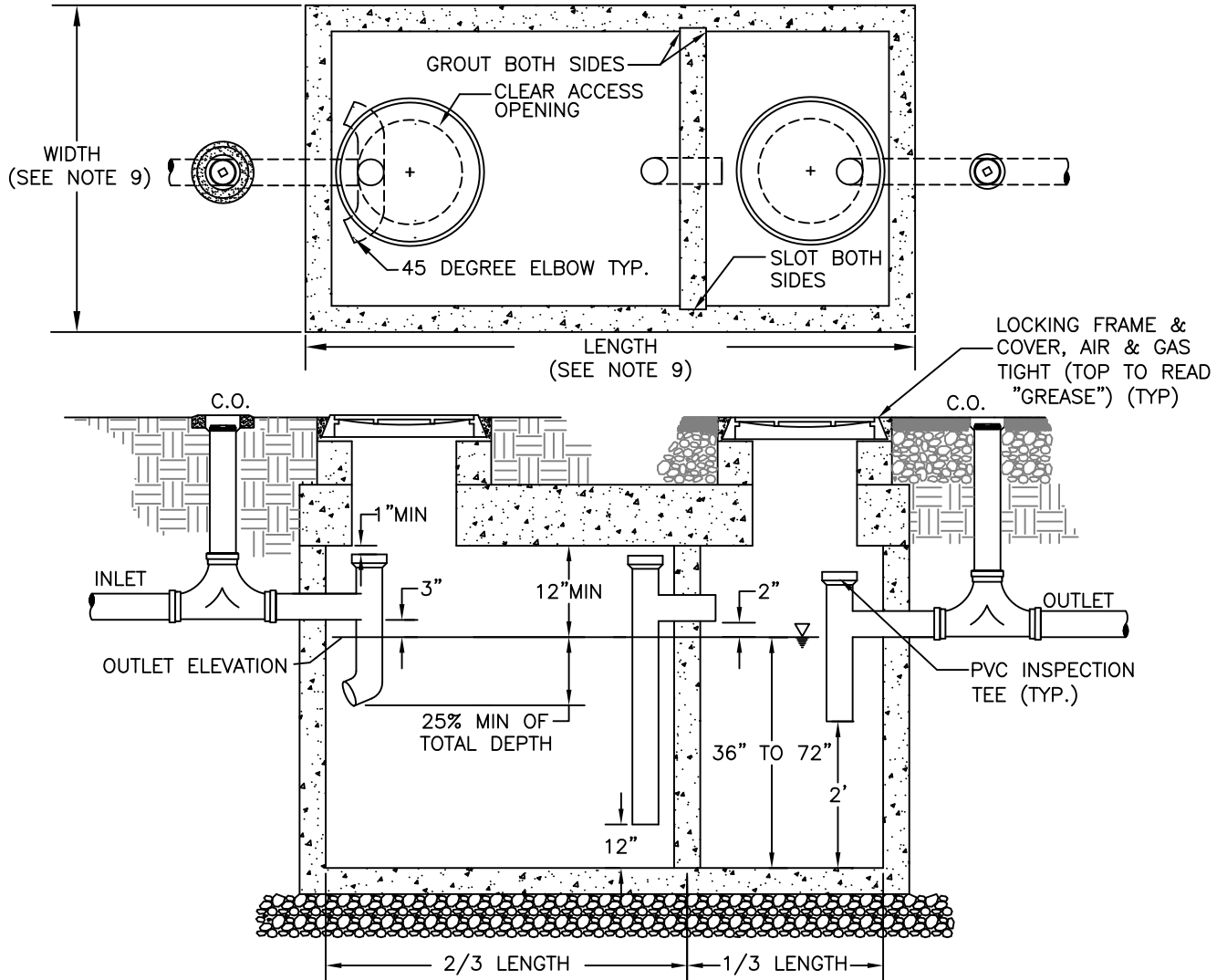


NOTES:

1. CONCRETE: 28 DAY \geq 4500 psi.
2. REBAR: ASTM A615 GRADE 60.
3. MESH: ASTM A.185 GRADE 65.
4. DESIGN: ACI318.83 BUILDING CODE – ASTM C.857 MINIMUM STRUCTURAL DESIGN LOADING FOR UNDERGROUND PRECAST CONCRETE UTILITY STRUCTURES.
5. LOADS: H-20 TRUCK WHEEL w/30% IMPACT PER AASHTO.
6. FILL w/CLEAN WATER PRIOR TO START UP OF SYSTEM.
7. CONTRACTOR TO SUPPLY & INSTALL ALL PIPING AND SANITARY TEES. 2 DOUBLE-SWEEP CLEAN OUTS (FOR CLEANING TOWARD AND AWAY FROM TANK ON BOTH THE INLET AND OUTLET SIDES).
8. GREY WATER ONLY, BLACK WATER SHALL BE CARRIED.
9. THE LENGTH OF THE TANK SHALL BE ONE AND ONE HALF (1.5) TIMES THE WIDTH.
10. IN UNPAVED AREAS, PROPERLY BED AND SET EDGE OF PRECAST CONCRETE COLLAR FLUSH WITH FINISHED GRADE. NO COLLAR IS REQUIRED IN PAVED AREAS, SET CLEANOUT FLUSH WITH PAVEMENT.



GRAVITY GREASE INTERCEPTOR

STANDARD
CONSTRUCTION
DETAILS



CITY OF
savannah
WATER RESOURCES AND PUBLIC WORKS BUREAU
Planning & Engineering

SCALE: N.T.S.
DATED: JAN 2017
PLATE NUMBER:
S26